

## A Two Minute Toolbox



# SPECIAL EDUCATIONAL NEEDS SUPPORT

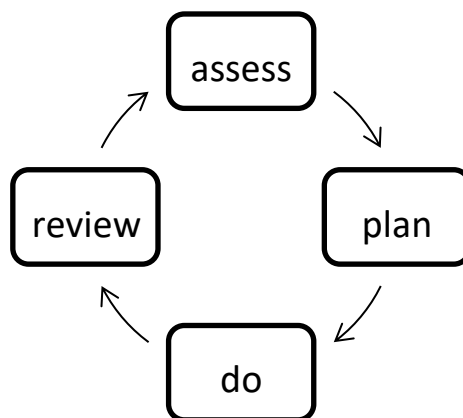
Prepared by Dr Karen Faulds: SENDCo

## SEND Support

If your child has been identified with Special Educational Needs or Disabilities (SEND), they will be able to access support from a variety of sources. First steps in obtaining help will be to visit the Local Offer website published by the appropriate Local Authority, which will detail the services available locally. In school, the curriculum will be differentiated as necessary to enable your child to make progress, and additional interventions will be offered using a graduated approach. The process we use in school is published in our Local Offer, and further details of possible actions and interventions available in school may be obtained from your child's class teacher, on request.

You will be contacted by the class teacher, who will invite you to a meeting, where your views will be sought before any interventions are designed or implemented.

The four stages of SEND support are:



## **Assess**

Assessments will help us provide the right support for your child. We will seek information from several sources. We will find out what you think, talk to all the teachers working with your child, seek views from teachers at previous settings, and review any records available. We may need to observe your child in a variety of situations and we may refer you to specialists outside school for more detailed assessment or advice, in order to clarify barriers to learning.

## **Plan**

With your help, we will use all the information available to us to identify achievable targets. We will carefully consider any advice contained in specialist reports, and combine this with our detailed knowledge of your child's needs. We will describe the outcomes that the SEND support provided is designed to achieve, and this will form your child's School Support Plan. Included on the plan will be details of the length and frequency of any support sessions, who will deliver them, and whether they will be one-to-one or part of a small group.

## **Do**

The support will be put in place. The Special Educational Needs and Disabilities Coordinator (SENDCo) will help the class teacher to track your child's progress and monitor the effectiveness of the extra help.

## **Review**

We will arrange termly meetings with you, where your child's progress can be reviewed against the success criteria set out in the School Support Plan. We will then decide together whether the extra help is making a difference, whether the desired outcomes are being met, and how the extra help needs to be changed to sustain any improvements.

## **Help outside school**

If your child's difficulty requires regular specialist input which we cannot provide within school, we will help you to find a suitable therapist and liaise with them to ensure that therapy goals are extended into classroom learning wherever possible.